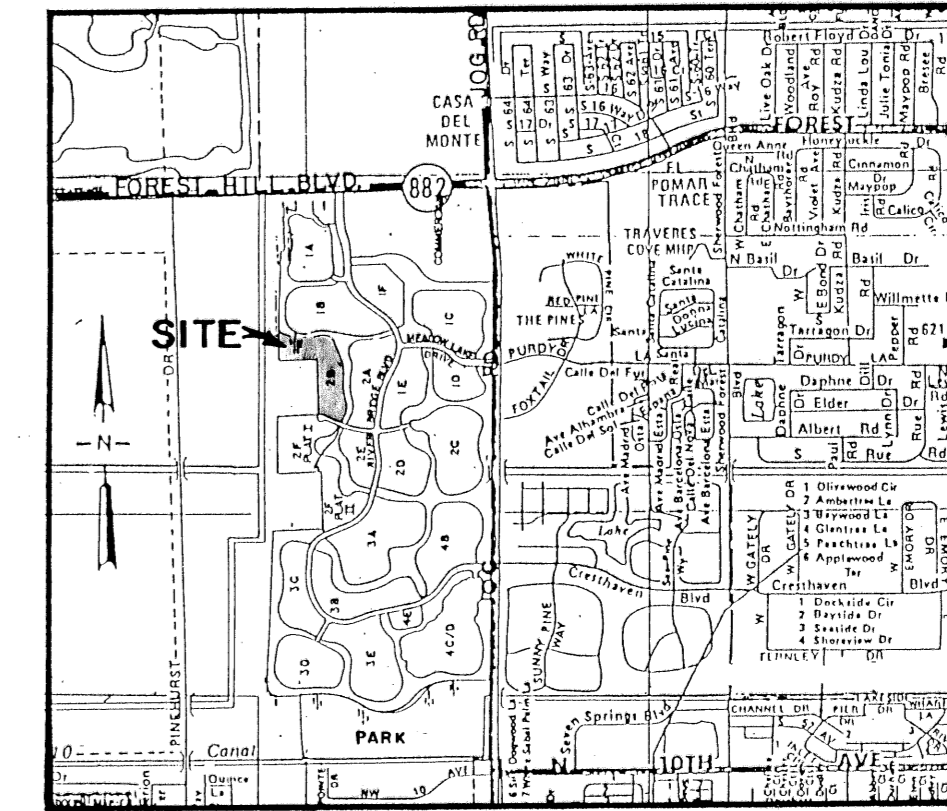


STATE OF FLORIDA
 COUNTY OF PALM BEACH
 This plat was filed for
 record at _____, this
 day of _____, 1994,
 and duly recorded in
 Plat Book No. _____ on
 Pages _____ thru _____.

MILTON T. BAUER
 Clerk Circuit Court
 By: _____

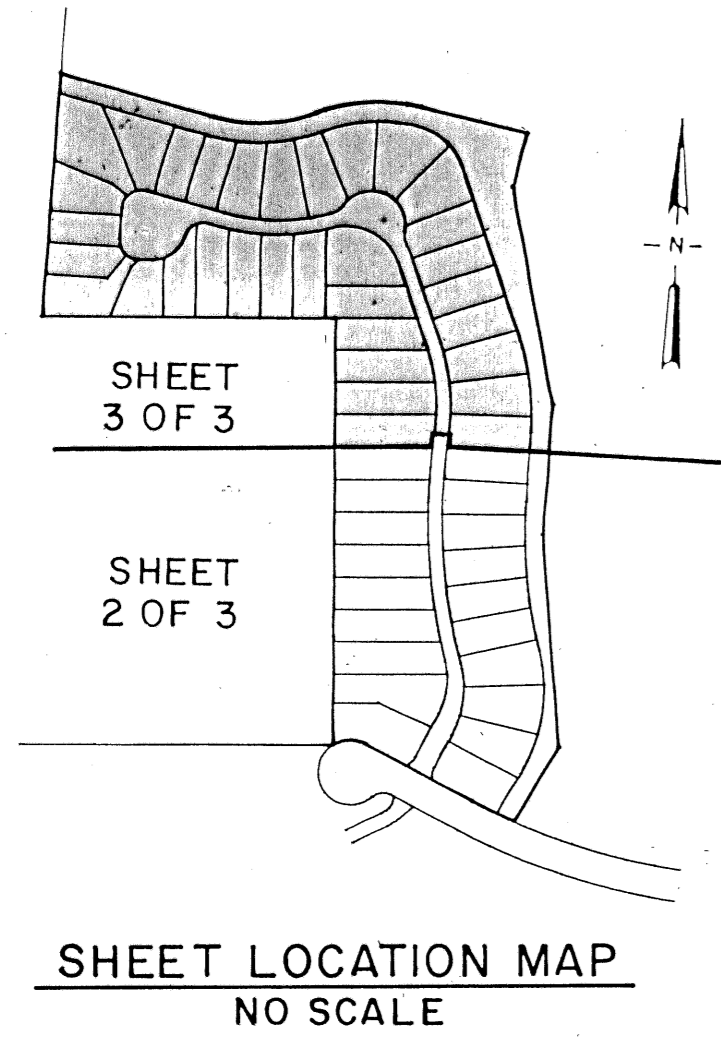


LOCATION MAP n.t.s.
 SECTION 15, TWP. 44S., RGE. 42E.

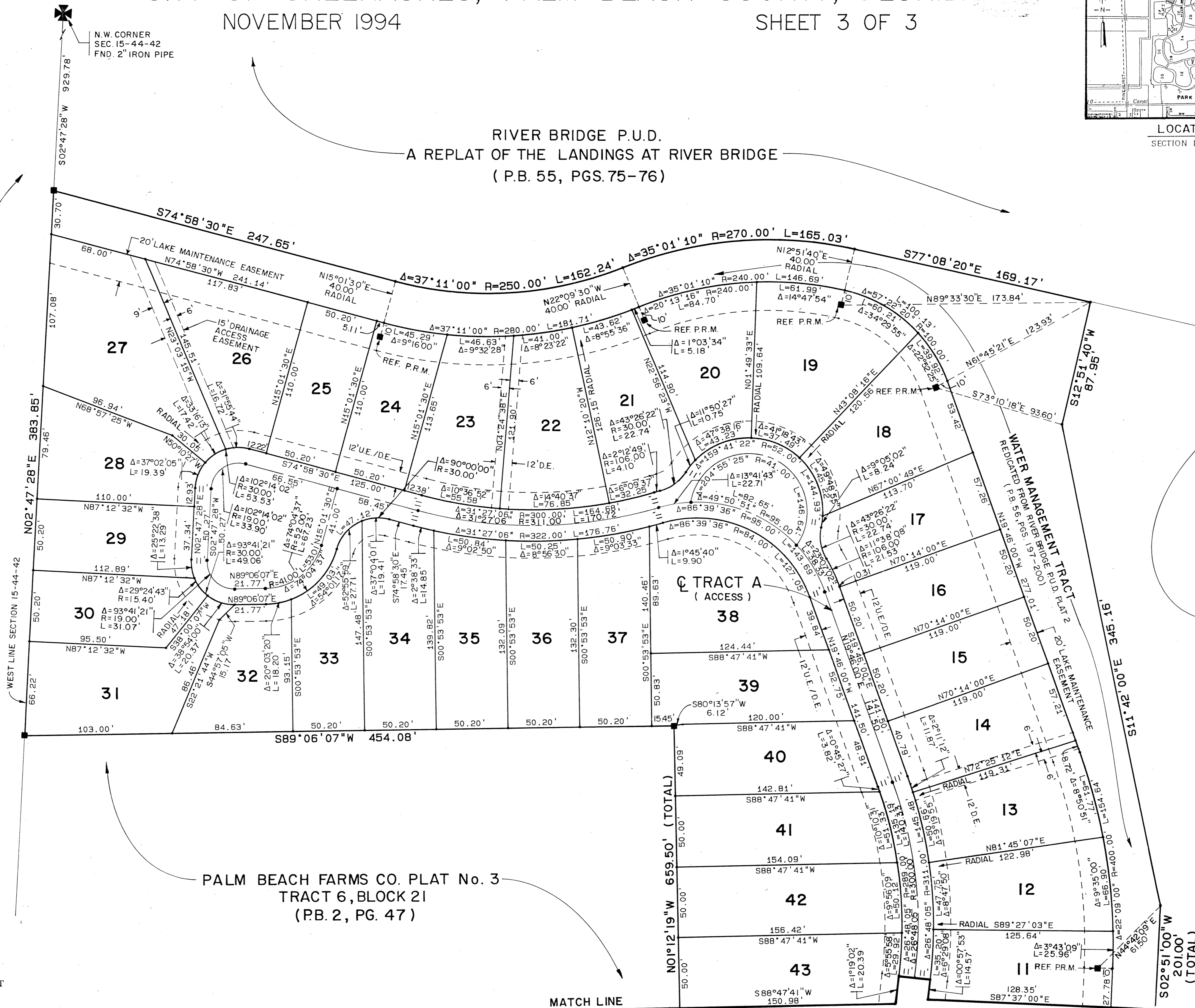
RIVER BRIDGE P.U.D. PARCEL 2B

BEING A REPLAT OF PARCEL 2B
 RIVER BRIDGE P.U.D. PLAT 2, (P.B. 56 PGS. 197 - 200)
 LYING IN SECTION 15, TOWNSHIP 44 SOUTH, RANGE 42 EAST
 CITY OF GREENACRES, PALM BEACH COUNTY, FLORIDA.
 NOVEMBER 1994

SHEET 3 OF 3



RIVER BRIDGE P.U.D.
 A REPLAT OF THE LANDINGS AT RIVER BRIDGE
 (P.B. 55, PGS. 75-76)



LEGEND

C/CALC	CALCULATED DIMENSION
D.E.	DRAINAGE EASEMENT
DISC	BRASS DISC
FD/FND	FOUND
L.B.	LICENSED BUSINESS
L.S.	LAND SURVEYOR
N.R.	NON-RADIAL
O.R.B.	OFFICIAL RECORD BOOK
P/PLAT	PREVIOUSLY PLATTED
P.B.	PLAT BOOK
P.C.P.	PERMANENT CONTROL POINT
P.L.S.	PROFESSIONAL LAND SURVEYOR
P.O.B.	POINT OF BEGINNING
P.O.C.	POINT OF COMMENCEMENT
P.R.M.	PERMANENT REFERENCE MONUMENT
P.C.	POINT OF CURVATURE
P	P BRAND NAIL
PT.	POINT OF TANGENCY
R/REC	RECORD DATA
R/W	RIGHT-OF-WAY
REF.	REFERENCE
RGE.	RANGE
SEC.	SECTION
TWP.	TOWNSHIP
TYP.	TYPICAL
U.E.	UTILITY EASEMENT

PALM BEACH PINES STATE PARK
 PALM BEACH FARMS CO. PLAT No. 3
 (P.B. 2, PG. 47)

PALM BEACH FARMS CO. PLAT No. 3
 TRACT 6, BLOCK 21
 (P.B. 2, PG. 47)

RIVER BRIDGE P.U.D. PLAT 2
 REPLAT OF PARCEL 2A
 (P.B. 64, PGS. 36-37)

MATCH LINE
 SEE SHEET 2 OF 3

SUBDIVISION # River Bridge PUD 2B
 BOOK 73 PAGE 6
 FLOOR PLANS - PLAT MAP # -
 QUAD # -
 SE - CODE -
 PUD NAME Greenacres
 1544142

PETSCHÉ & ASSOCIATES, INC.
 Professional Engineers - Land Surveyors - Development Consultants - Testing Services
 2581 Metrocentre Boulevard, Suite 6, West Palm Beach, Florida 33407 (407) 640-3800
 6799 Overseas Highway, Suite 7, Marathon, Florida 33050 (305) 743-5788

RIVER BRIDGE P.U.D. PARCEL 2B

SECTION 15, TOWNSHIP 44S., RANGE 42E.
 CITY OF GREENACRES, FLORIDA

Drawn by:	Date:	SCALE:	JOB NUMBER:	SHEET	OF
M.E.H.	FEB. 1994	1" = 40'	94-001	3	OF 3
Designed by:	Checked by:				
R. HAGLER					